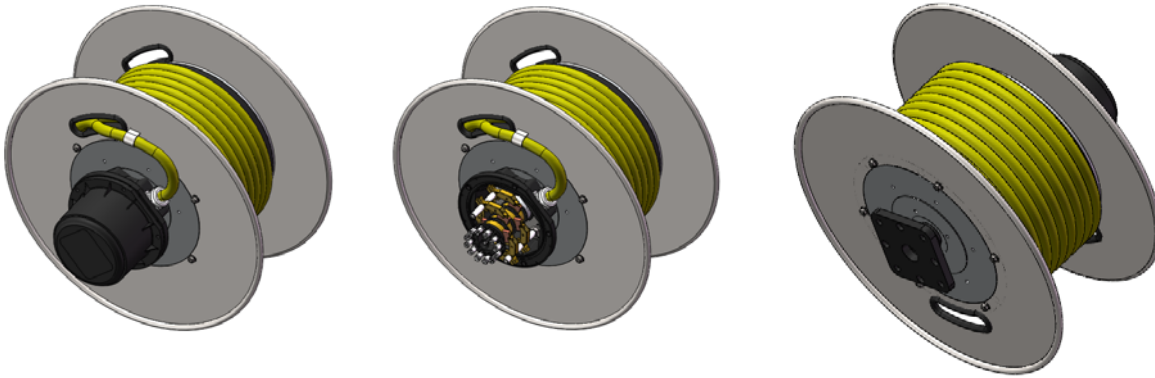
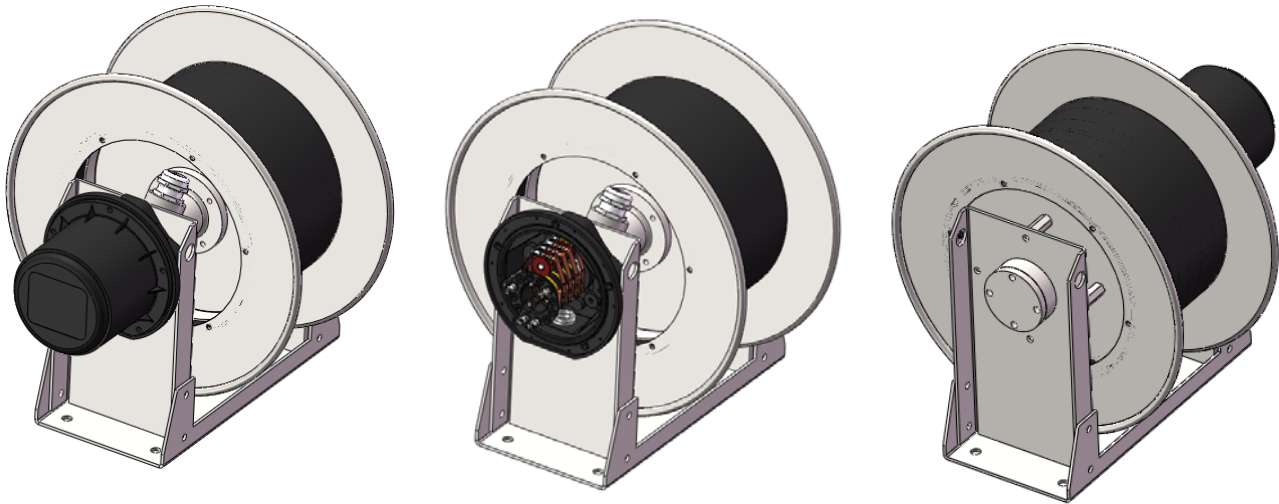


S28H 系列弹簧驱动电缆卷筒



S28M 系列弹簧驱动电缆卷筒



技术参数: Technical parameters:

材料及构造: 卷筒本体及安装法兰采用钢件制造。弹簧为高寿命高等级的弹簧钢。

Materials & Structure: The drum body and mounting flange are made of steel. Spring is the high life high-grade spring steel.

卷绕速度: 水平卷绕 63m/min 垂直卷绕 30m/min

Winding speed: Horizontal : 63m/min Vertical winding: : 30m/min

卷取长度: 水平最大卷绕长度: 50 米, 垂直最大卷绕长度 25 米

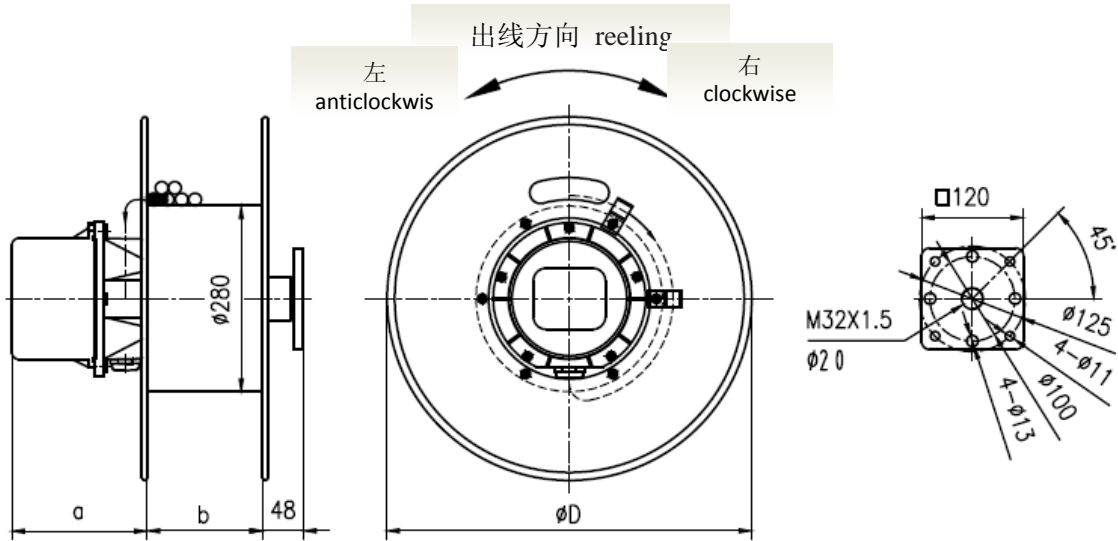
Winding length: The Max Horizontal winding length:50m, The Max Vertical winding length: 25m

电缆参数: 外径 Max $\Phi 20\text{mm}$, 重量 Max 0.8kg/m;

Cable Spec: MaxOD: $\Phi 20\text{mm}$, Max weight: Max 0.8kg/m;

电气参数: $V_{\text{max}} 500\text{V}$, $I_{\text{max}} 40\text{A}$ Electric parameter: $V_{\text{max}} 500\text{V}$, $I_{\text{max}} 40\text{A}$

防护等级: IP54 Grade: IP54

S28H 型选型表
S28H type Selection Tables for Reels

 Application: **A** Vertical **D**: Horizontal and Vertical Retrieval

电缆 Cable	卷取 方式	电缆长度 Lw/Li (m)	卷筒型号 Reel type	D (mm)	a (mm)	b (mm)	滑环箱 Slipring- body	法兰 Flange type
5*1.5mm ² 10.1mm 0.143kg/m	A	11/1.5	S28H3618-0205-1A	360	175	175	1	1.2
	D	11/1.5						
	A	25/1.5	S28H4318-0205-2S	430	175	175	1	1.2
	D	25/1.5						
	A	40/1.5	S28H4318-0205-3S	430	175	175	1	1.2
	D	40/1.5						
A	55/1.5	S28H4320-0205-4S	430	175	207	1	1.2	
D	55/1.5							
7*1.5mm ² 11mm 0.19kg/m	A	11/1.5	S28H3618-0207-1A	360	220	175	1	1.2
	D	11/1.5						
	A	25/1.5	S28H4318-0207-2S	430	220	175	1	1.2
	D	25/1.5						
	A	40/1.5	S28H4318-0207-3S	430	220	175	1	1.2
	D	40/1.5						
A	55/1.5	S28H4320-0207-4S	430	220	207	1	1.2	
D	55/1.5							
12*1.5mm ² 15.5mm 0.34kg/m	A	11/1.5	S28H4318-0512-1A	430	220	175	2	1.2
	D	11/1.5						
	A	25/1.5	S28H5018-0512-2S	500	220	175	2	1.2
	D	25/1.5						
	D	45/1.5	S28H5018-0512-3S	500	220	175	2	1.2

电缆 Cable	卷取 方式	电缆长度 Lw/Li (m)	卷筒型号 Reel type	D (mm)	a (mm)	b (mm)	滑环箱 Slipring- body	法兰 Flange type
18*1.5mm ² 18mm 0.484kg/m	A	12/1.5	S28H4318-0518-1A	430	260	175	2	1.2
	D	12/1.5						
	A	21/1.5	S28H5018-0518-2S	500	260	175	2	1.2
	D	27/1.5						
	D	48/1.5	S28H5520-0518-3S	550	260	207	2	1.2
	A	27/1.5	S28H5018-0518-2SP	500	260	207	2	1.2
24*1.5mm ² 19.8mm 0.603kg/m	A	12/1.5	S28H5018-0524-1A	500	300	175	2	1.2
	D	12/1.5						
	A	16/1.5	S28H5518-0524-2S	550	300	175	2	1.2
	D	27/1.5						
	D	50/1.5	S28H5520-0524-3S	550	300	207	2	1.2
	A	27/1.5	S28H5518-0524-2SP	550	300	207	2	1.2
30*1.5mm ² 25mm 0.893kg/m	A	11/1.5	S28H5018-0530-1A	500	350	175	2	1.2
	D	13/1.5						
	D	30/1.5	S28H5520-0530-2S	550	350	207	2	1.2
	A	20/1.5	S28H5520-0530-2SP	550	350	207	2	1.2
	D	30/1.5						
4*2.5mm ² 10mm 0.179kg/m	A	11/1.5	S28H3618-0204-1A	360	175	175	1	1.2
	D	11/1.5						
	A	24/1.5	S28H3618-0204-2S	360	175	175	1	1.2
	D	24/1.5						
	A	40/1.5	S28H4318-0204-3S	430	175	175	1	1.2
	D	40/1.5						
	A	51/1.5	S28H4320-0204-4S	430	175	207	1	1.2
D	51/1.5							
5*2.5mm ² 12mm 0.22kg/m	A	11/1.5	S28H3618-0205-1A	360	175	175	1	1.2
	D	11/1.5						
	A	23/1.5	S28H4318-0205-2S	430	175	175	1	1.2
	D	23/1.5						
	A	37/1.5	S28H4318-0205-3S	430	175	175	1	1.2
	D	37/1.5						
	A	48/1.5	S28H4320-0205-4S	430	175	207	1	1.2
	D	52/1.5						
7*2.5mm ² 14.8mm 0.334kg/m	A	25/1.5	S28H4318-0207-2S	430	220	175	1	1.2
	D	25/1.5						
	A	31/1.5	S28H5018-0207-3S	500	220	175	1	1.2
	D	39/1.5						
	D	53/1.5	S28H5020-0207-4S	500	220	207	1	1.2

电缆 Cable	卷取 方式	电缆长度 Lw/Li (m)	卷筒型号 Reel type	D (mm)	a (mm)	b (mm)	滑环箱 Slipring- body	法兰 Flange type	
12*2.5mm ² 19.8mm 0.564kg/m	A	12/1.5	S28H5018-0512-1A	500	220	175	2	1.2	
	D	12/1.5							
		A	18/1.5	S28H5518-0512-2S	550	220	175	2	1.2
		D	26/1.5						
		D	43/1.5	S28H5520-0512-3S	550	220	207	2	1.2
		A	26/1.5	S28H5518-0512-2SP	550	220	207	2	1.2
18*2.5mm ² 19.5mm 0.672kg/m	A	12/1.5	S28H5018-0518-1A	500	260	175	2	1.2	
	D	12/1.5							
		A	16/1.5	S28H5518-0518-2S	550	260	175	2	1.2
		D	26/1.5						
		D	42/1.5	S28H5520-0518-3S	550	260	207	2	1.2
		A	27/1.5	S28H5518-0518-2SP	550	260	207	2	1.2
24*2.5mm ² 22.5mm 0.875kg/m	A	12/1.5	S28H5020-0524-1A	500	300	207	2	1.2	
	D	11/1.5							
	D	27/1.5	S28H5520-0524-2S	550	300	207	2	1.2	
	D	40/1.5	S28H5520-0524-3S	550	300	207	2	1.2	
	A	21/1.5	S28H5520-0524-2SP	550	300	207	2	1.2	
4*4mm ² 14mm 0.322kg/m	A	11/1.5	S28H4318-0204-1A	430	175	175	1	1.2	
	D	11/1.5							
		A	24/1.5	S28H4318-0204-2S	430	175	175	1	1.2
		D	24/1.5						
		A	34/1.5	S28H5018-0204-3S	500	175	175	1	1.2
		D	38/1.5						
D	52/1.5	S28H5020-0204-4S	500	175	207	1	1.2		
5*4mm ² 15.3mm 0.353kg/m	A	11/1.5	S28H4318-0205-1A	430	220	175	1	1.2	
	D	11/1.5							
		A	25/1.5	S28H5018-0205-2S	500	220	175	1	1.2
		D	25/1.5						
	D	39/1.5	S28H5018-0205-3S	500	220	175	1	1.2	
4*6mm ² 16.5mm 0.463kg/m	A	12/1.5	S28H4318-0204-1A	430	175	175	1	1.2	
	D	12/1.5							
		A	22/1.5	S28H5018-0204-2S	500	175	175	1	1.2
		D	25/1.5						
	D	40/1.5	S28H5018-0204-3S	500	175	175	1	1.2	
	A	25/1.5	S28H5018-0204-2SP	500	175	207	1	1.2	

电缆 Cable	卷取 方式	电缆长度 Lw/Li (m)	卷筒型号 Reel type	D (mm)	a (mm)	b (mm)	滑环箱 Slipring- body	法兰 Flange type
5*6mm ² 18mm 0.503kg/m	A	12/1.5	S28H4318-0205-1A	430	220	175	1	1.2
	D	12/1.5						
	A	19/1.5	S28H5018-0205-2S	500	220	175	1	1.2
	D	27/1.5						
	D	42/1.5	S28H5520-0205-3S	550	220	207	1	1.2
	A	27/1.5	S28H5018-0205-2SP	500	220	207	1	1.2
7*6mm ² 19.6mm 0.6685kg/m	A	12/1.5	S28H4318-0207-1A	430	220	175	1	1.2
	D	12/1.5						
	A	15/1.5	S28H5018-0207-2S	500	220	175	1	1.2
	D	27/1.5						
	D	44/1.5	S28H5520-0207-3S	550	220	207	1	1.2
	A	27/1.5	S28H5018-0207-2SP	500	220	207	1	1.2





湖南海润电气有限公司

Hunan Hairun Electric Co., Ltd.

地址：湖南省岳阳市麻塘镇

Address: Ma Town, Yueyang City, Hunan Province

电话 (Tel): +86-730-7830777 7832777

传真 (Fax): +86-730-7831777

邮箱 (Email): gs@hinar.com.cn

网址 (Website): <http://www.hinar.com.cn>